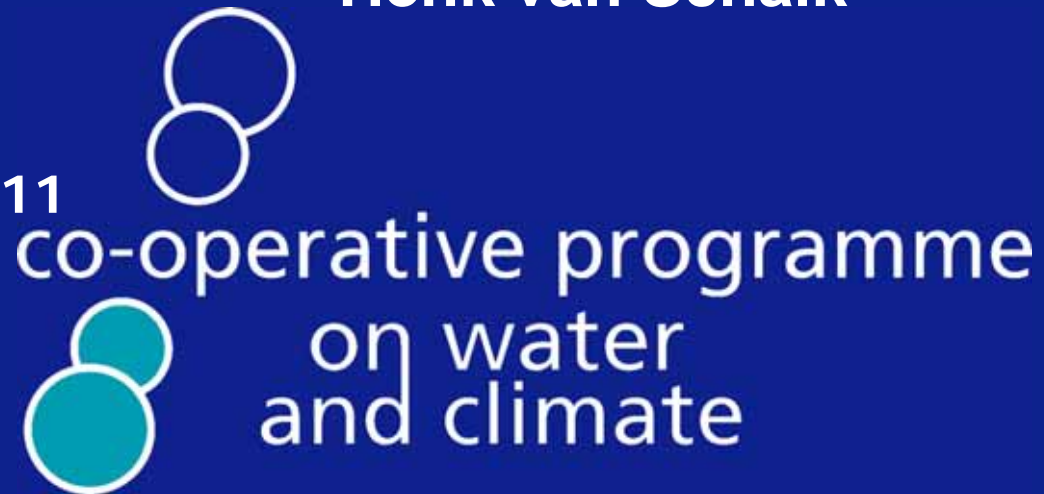


Henk van Schaik

Tashkent,
Uzbekistan
13 May, 2011



Water related Adaptation to Climate Change
from Noah till COP 17 and WWF-6

Noah's times

- For behold, I will bring a flood of waters upon the earth
....
- Make yourself an ark of gopher wood; make rooms in the ark and cover it insideThe length of the ark three hundred cubits, its breadth fifty cubits and its height thirty cubits.

Ark of Noah

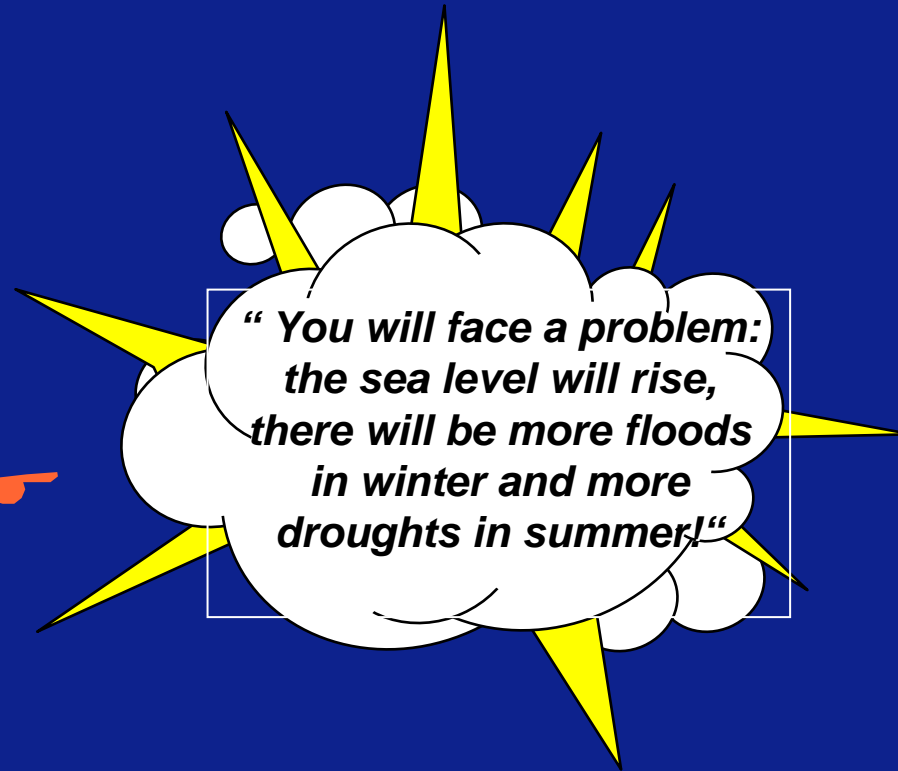
- Noah got strict instructions
- 300 cubits length, 50 cubits width and 30 cubits height
- 1 cubit is 50 cm.



Nowadays scientists



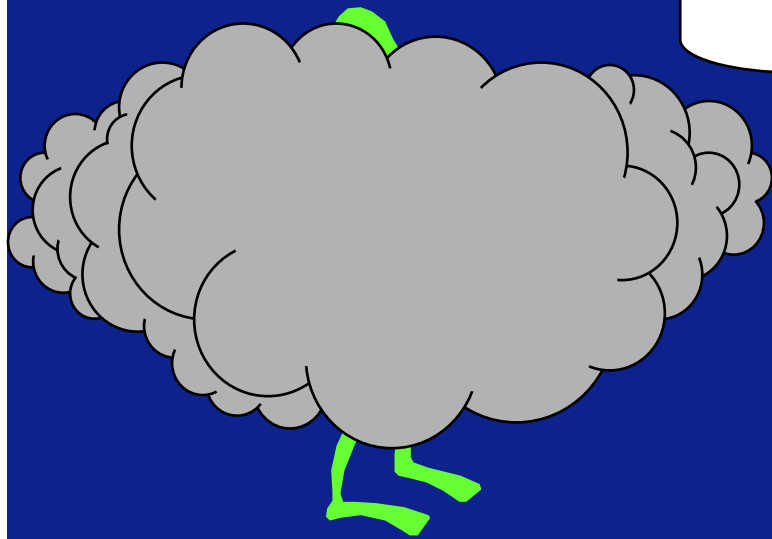
IPCC



Water Manager

Standard communication between climatologist/ hydrologist and water manager on Climate Change

“ How much, ..?? “



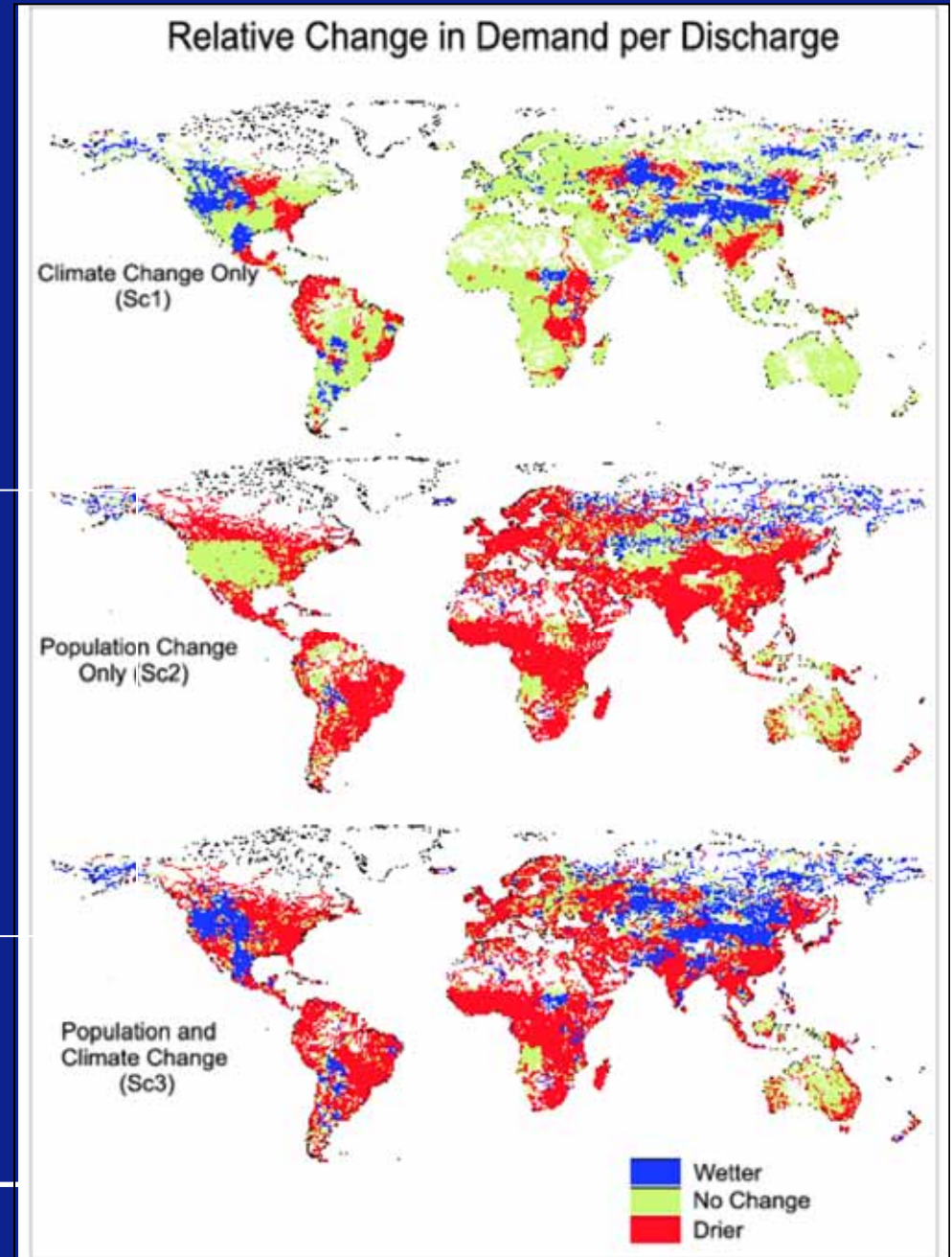
Climatologist/Hydrologist



Water manager

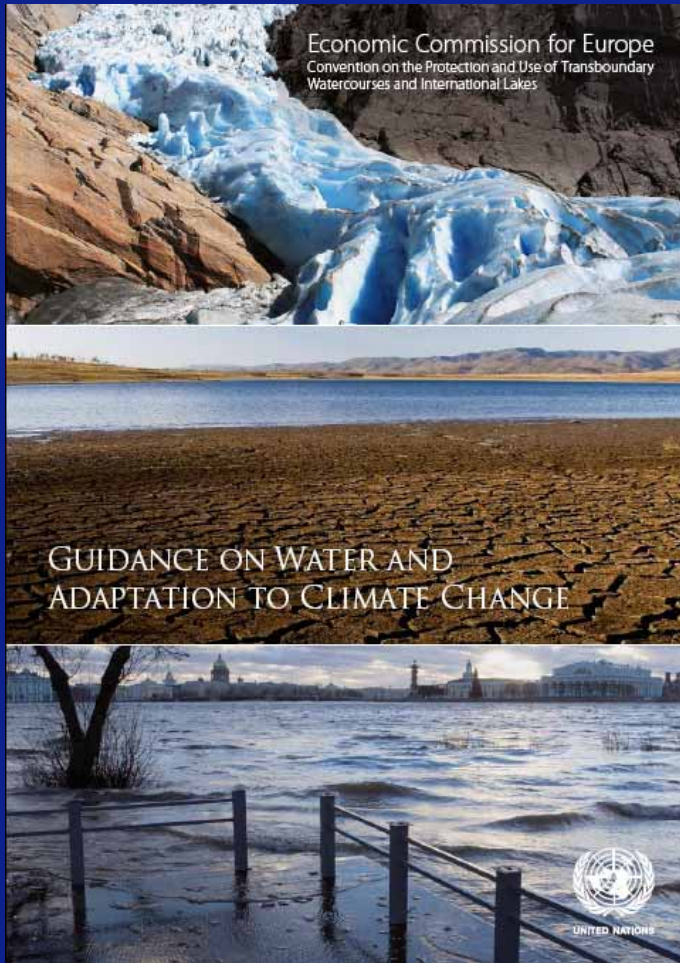
Water Stress Changes to 2025

- 80% of future stress from **population & development**,
- **Climate change additional!**

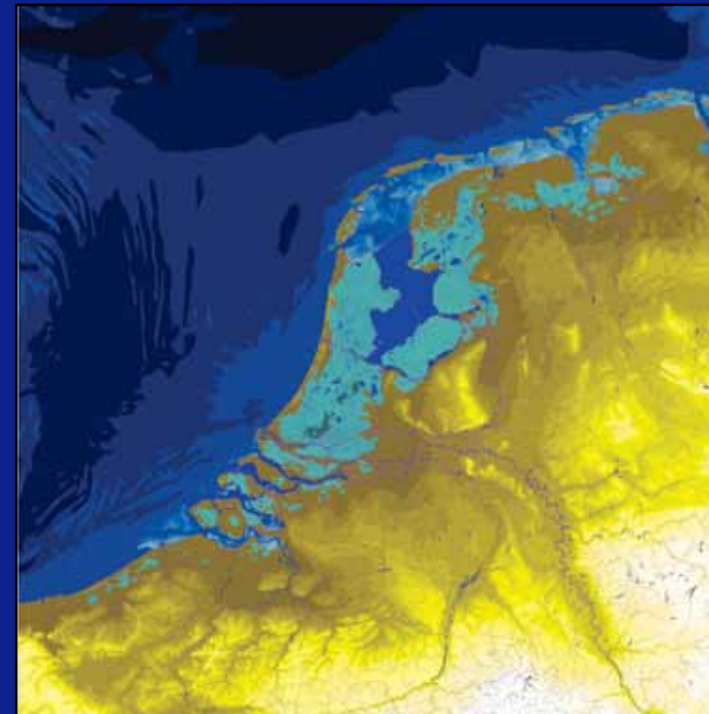
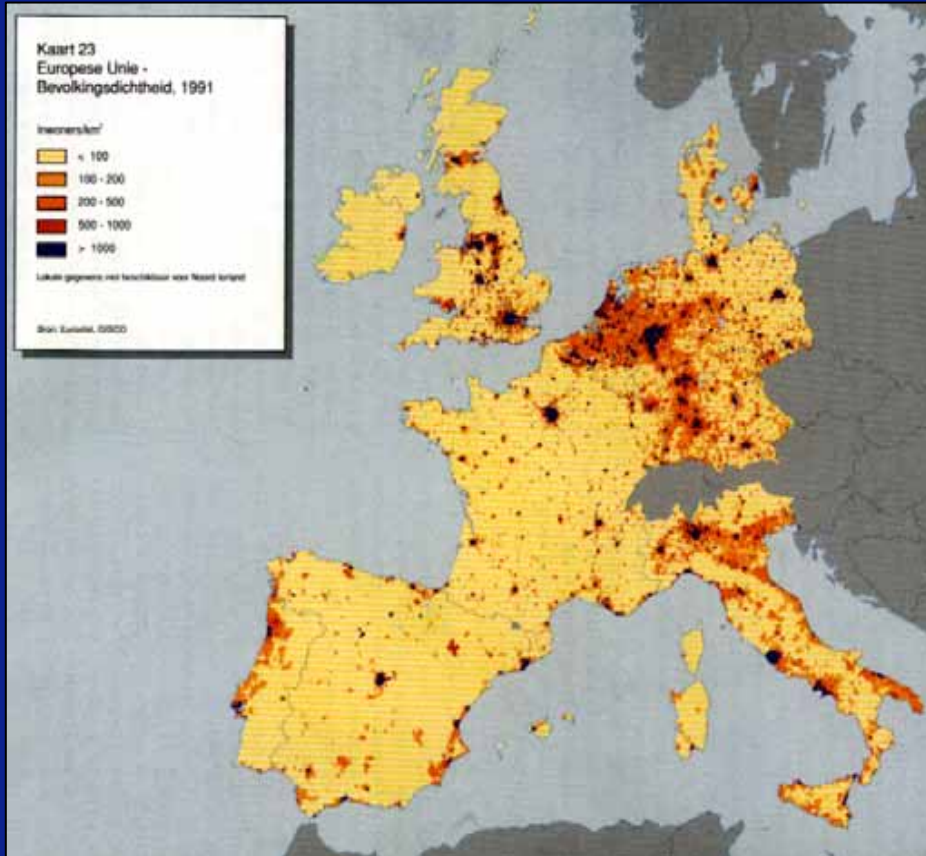


UNH

Guidances



The Netherlands



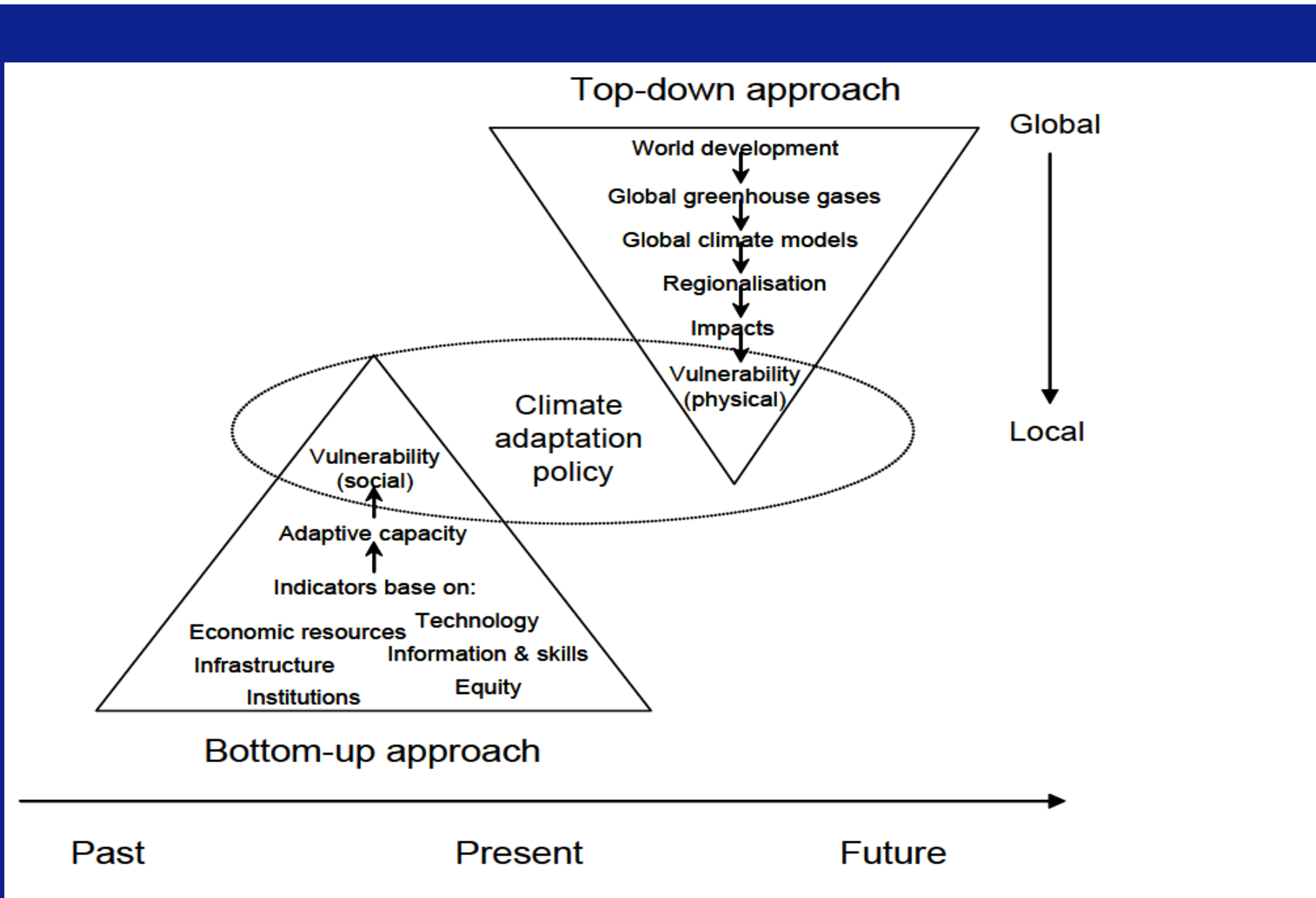
Below sealevel

55% Land / 60% Population
65% National Gross Product

Headlines



- North Sea coast
- Wadden area
- South-western Delta
- Rivers
- Rijnmond
- IJsselmeer area



Towards COP 17

- Water and Climate Coalition
 - SIWI, Stakeholder Forum, IUCN, WWF, IWA with support from GWP, CPWC etc.
 - Open ears and eyes of negotiators to get support for more WATER (in broad sense) in UNFCCC
- Central Asian countries are invited to join the call for more attention to WATER in Bonn, June 2011.

WWF-6

INVITATION to contribute to:

- **Core Group 3.3 “Respond to climate and global changes in an urbanizing world”.**
- ***Join Alliance for Global Water Adaptation***

**Attention of water managers
to Climate Change requires
and will continue to require
full attention of:**

Scientists for credibility
Government for legislation
Public to support

THANK YOU

