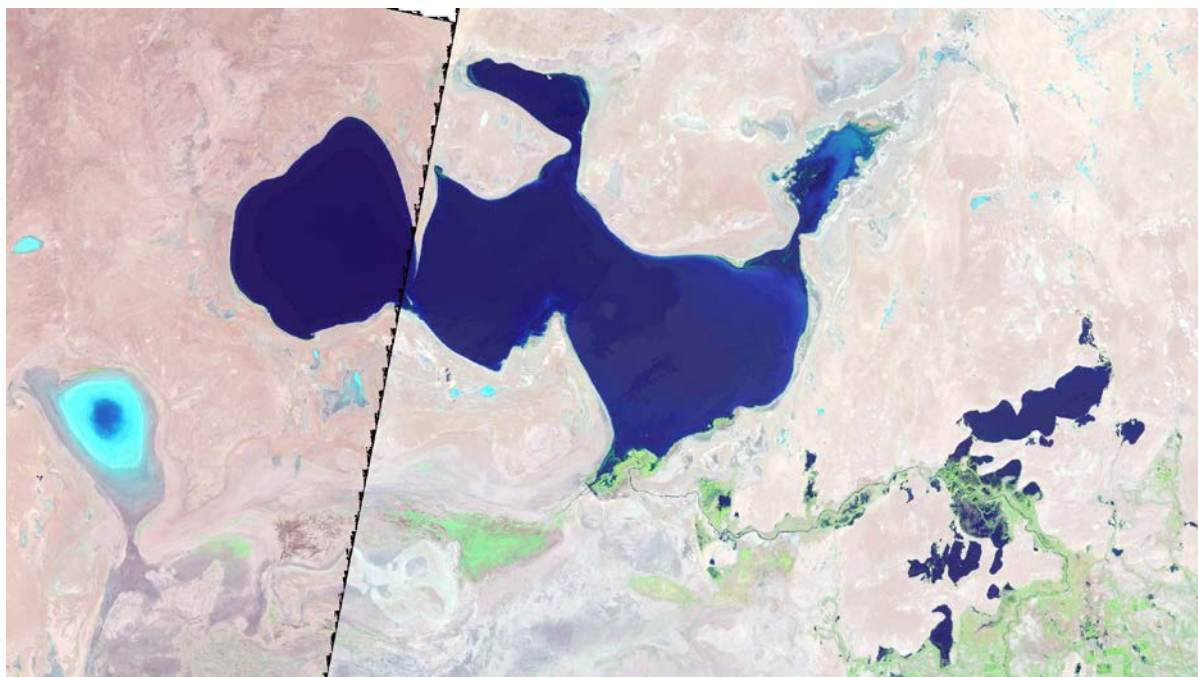


Monitoring of changes in the area of water surface and wetlands within the Small Aral Sea

SIC experts keep regular monitoring over the Small Aral Sea by using the Landsat 8-9 images. The areas of wetlands and open water surfaces were determined by the image dated 20 August 2025.



**Small Aral.
Landsat 8-9, 20 August 2025.**

Table

**Areas of wetlands, water surface and dried seabed*,
Small Aral Sea (ha)**

	28.03.2025	29.04.2025	31.05.2025	20.08.2025
Wetland	31986	27174	18706	28449
Water surface	323126	323148	320520	306524
Dry land*	186335	191125	202221	206474
Inflow from Syrdarya River (mln m ³)	March	April	May	July
	433	314	118	44

*bare soil, dense or rare vegetation

** Kazhydromet data

Prepared by: I. Ruziev, I. Ergashev