

The effect of oceanic and Aral Sea water on salinity tolerance *Paramecia* ssp. (Ciliophora).

*A.O. Smurov**, *S.I. Fokin***,
*N.V. Aladin**

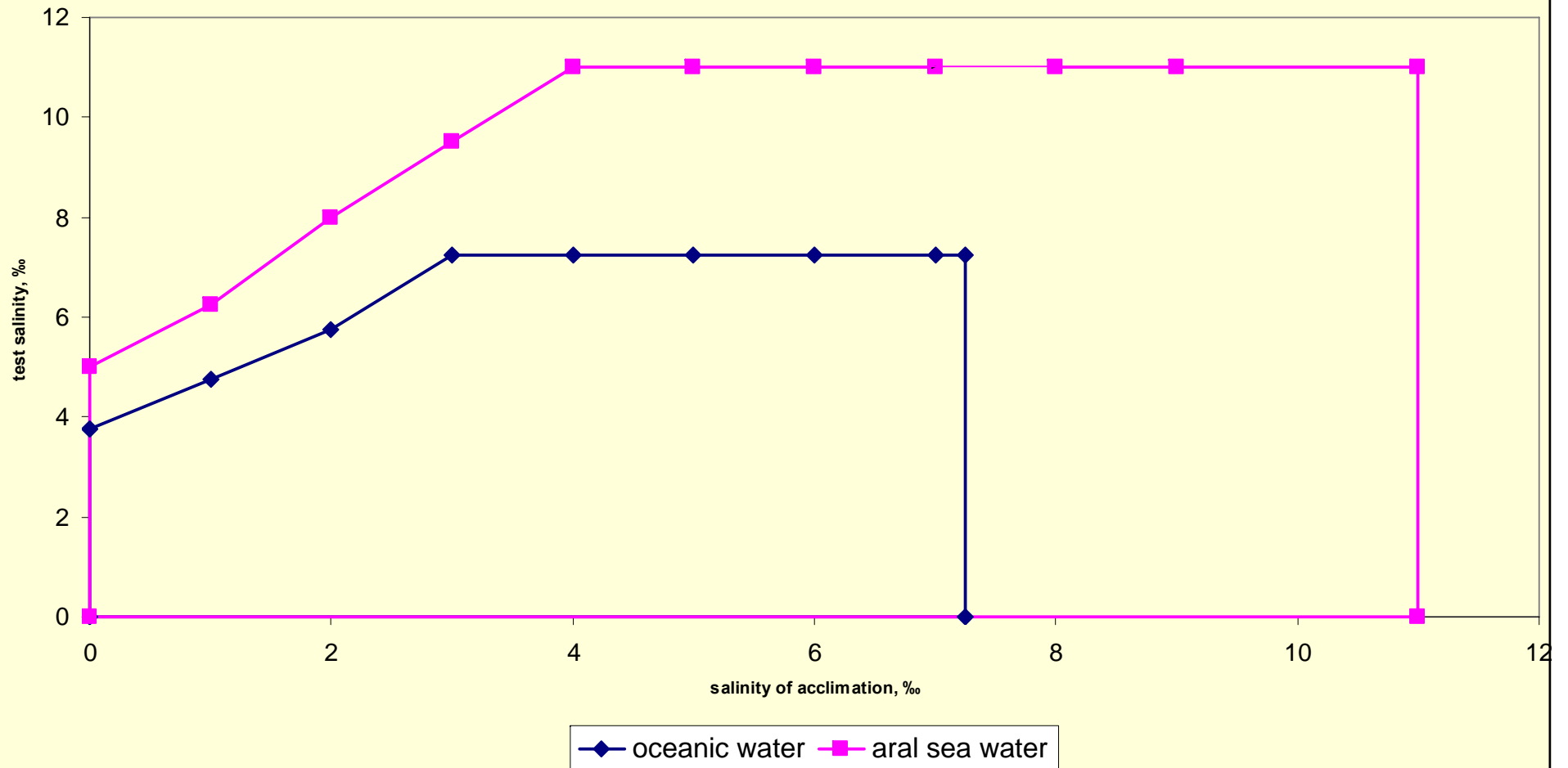
* - ZIN RAS

** - St.-Petersburg University

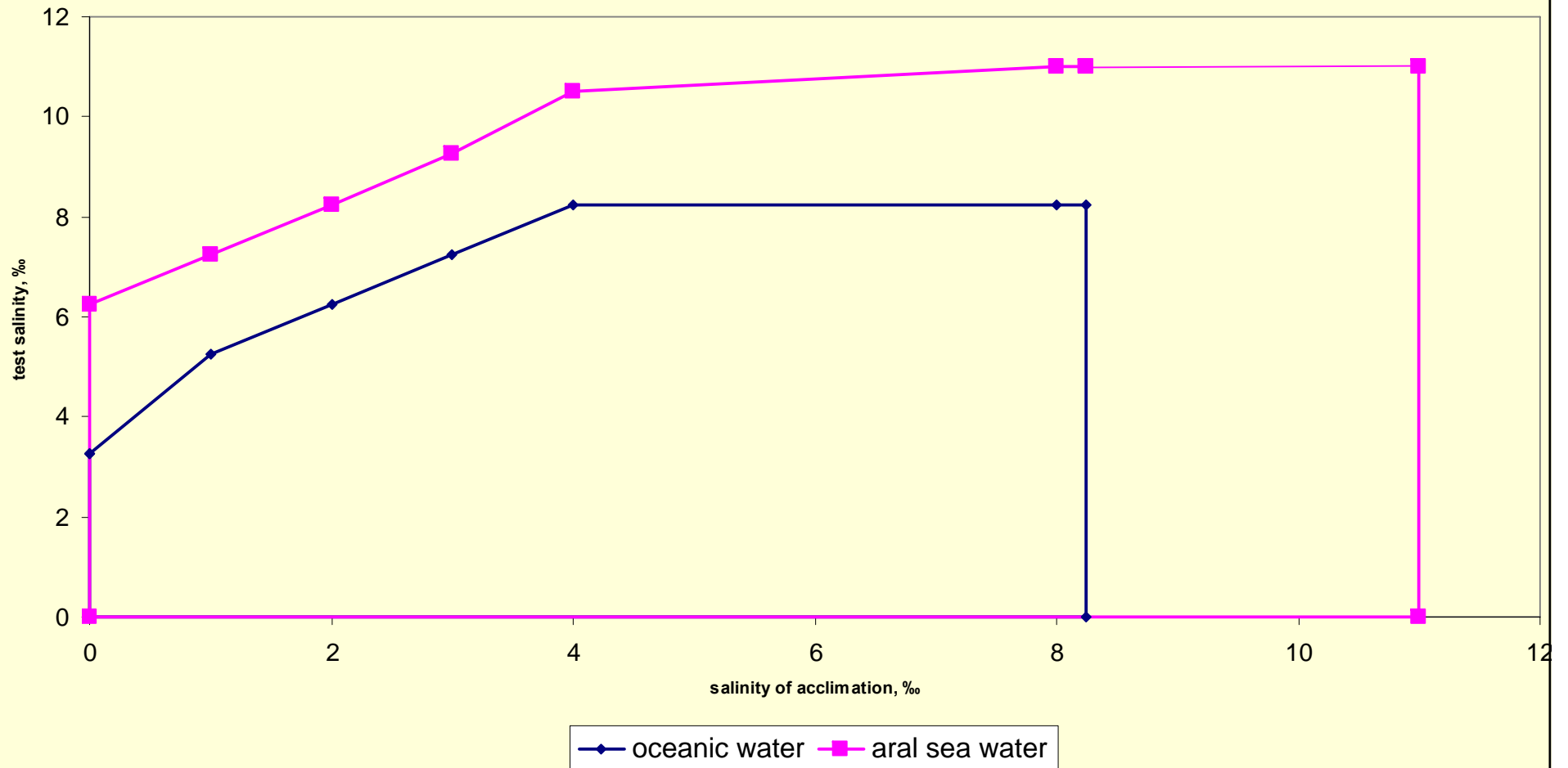
Some ion ratios of ocean and Aral Sea waters

Ratio	Ocean	Aral Sea	Continental flow
Na^+/Cl^-	0.86	1.00	1.25
$\text{SO}_4^{2-}/\text{Cl}^-$	0.10	0.68	1.00

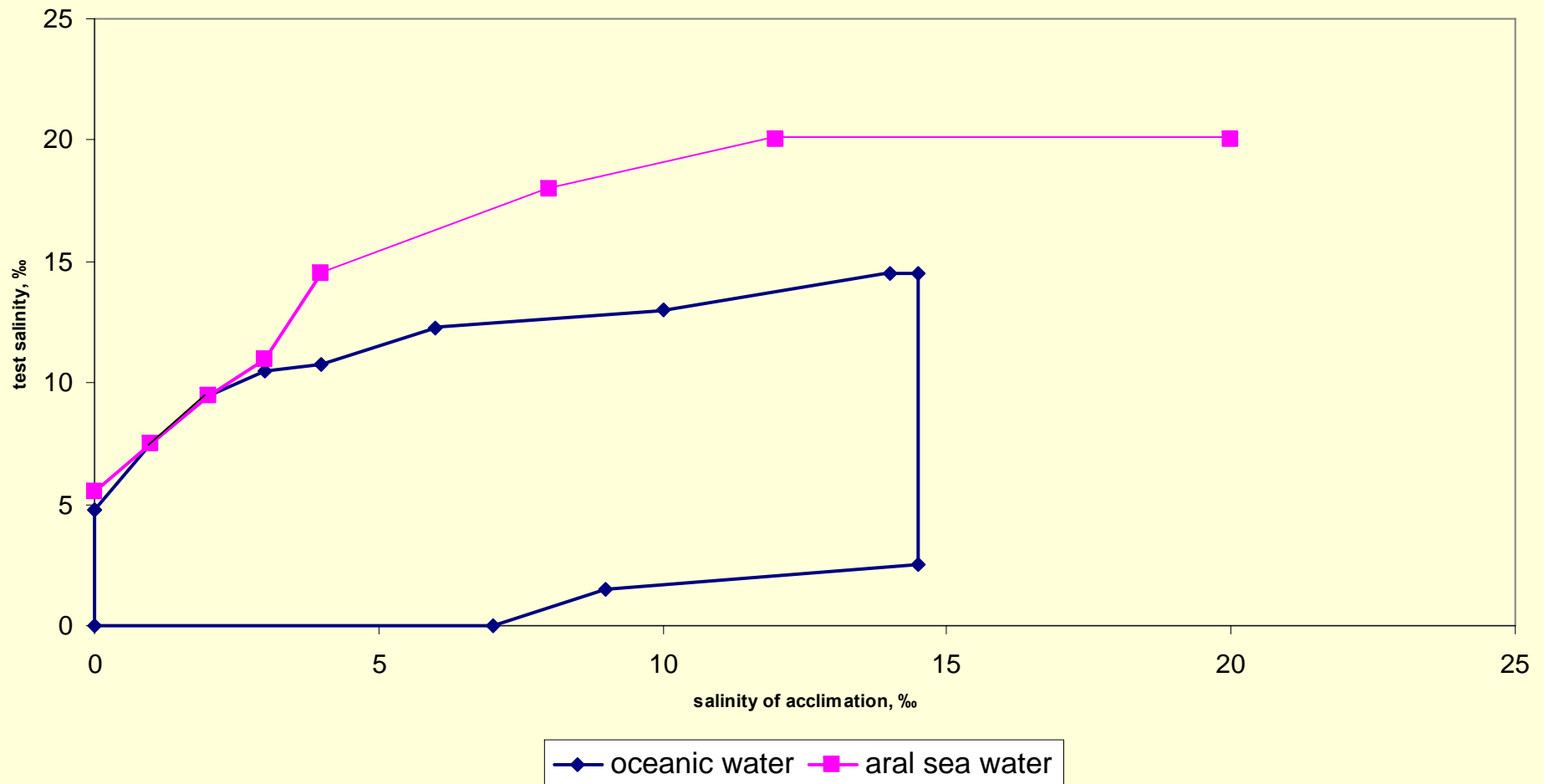
Salinity tolerance polygon of *P. caudatum*



Salinity tolerance polygon of *P. jenningsi*



Salinity tolerance polygon of *P. primaurelia*



$$S^M = \alpha \cdot Cl^M$$

$$S^A = \beta \cdot Cl^A$$

S^M - salinity of oceanic water (‰)

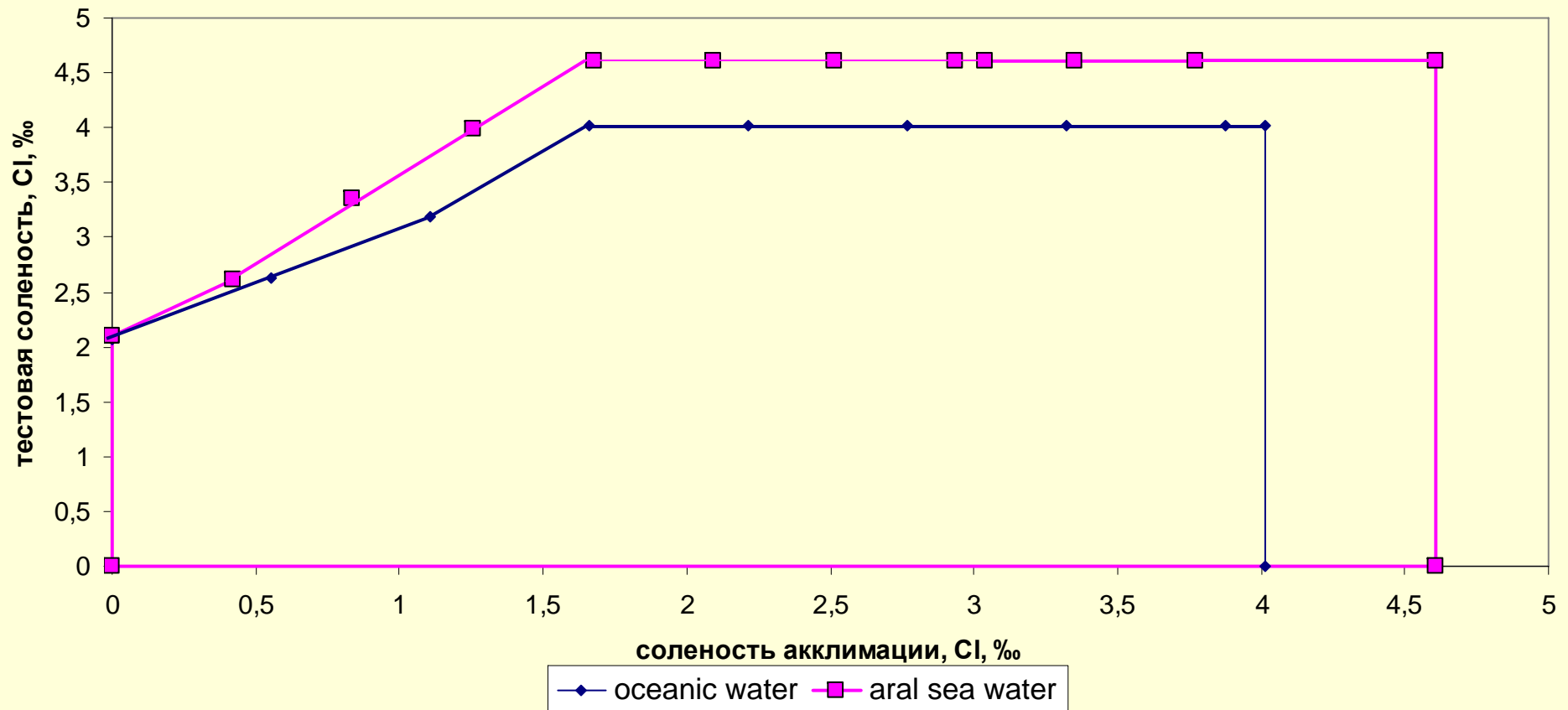
S^A - salinity of Aral Sea water (‰)

Cl^M - salinity of oceanic water (Cl, ‰)

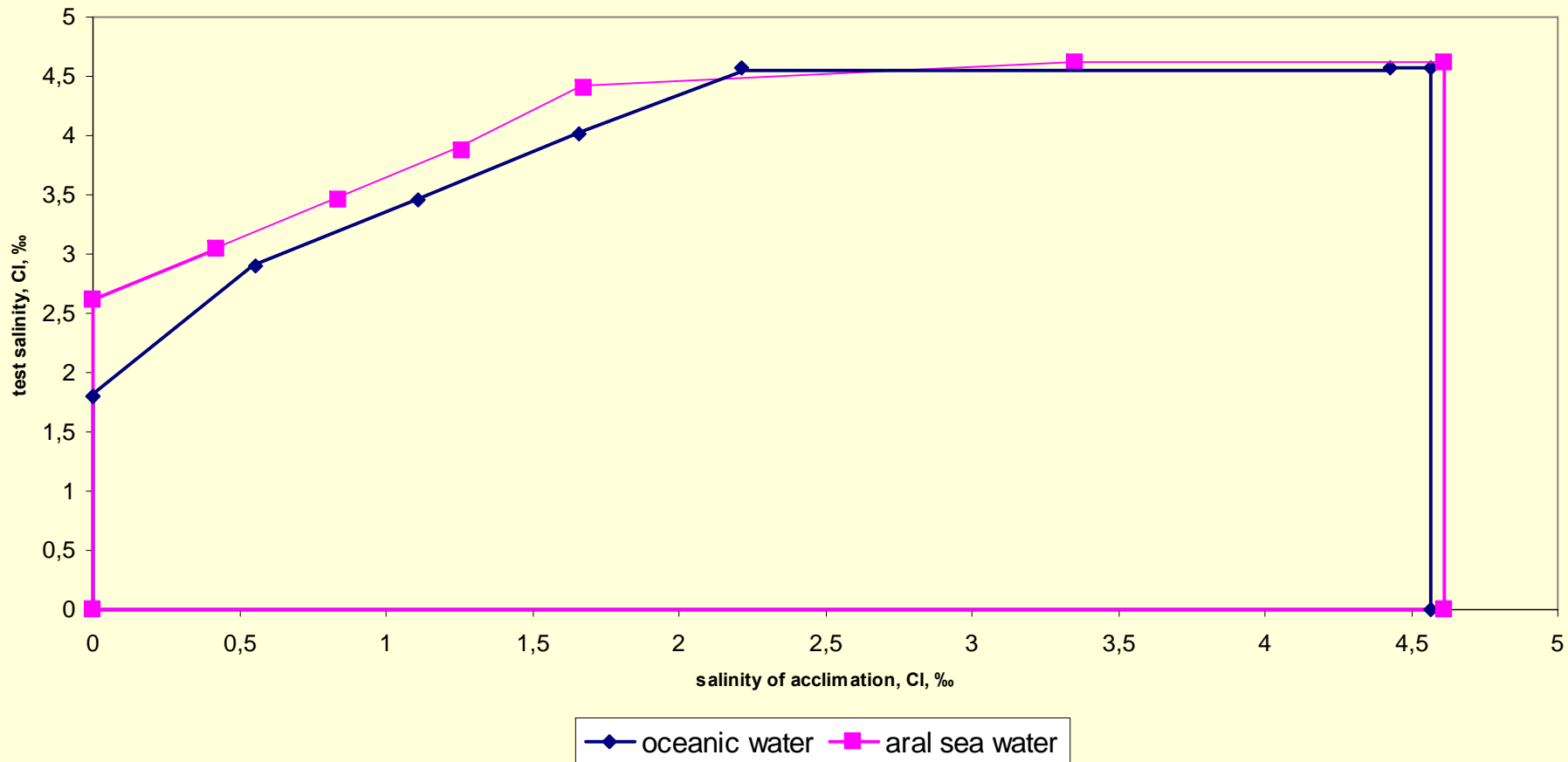
Cl^A - salinity of Aral Sea water (Cl, ‰)

$$\alpha = 1.806551 \quad \beta = 2.38586$$

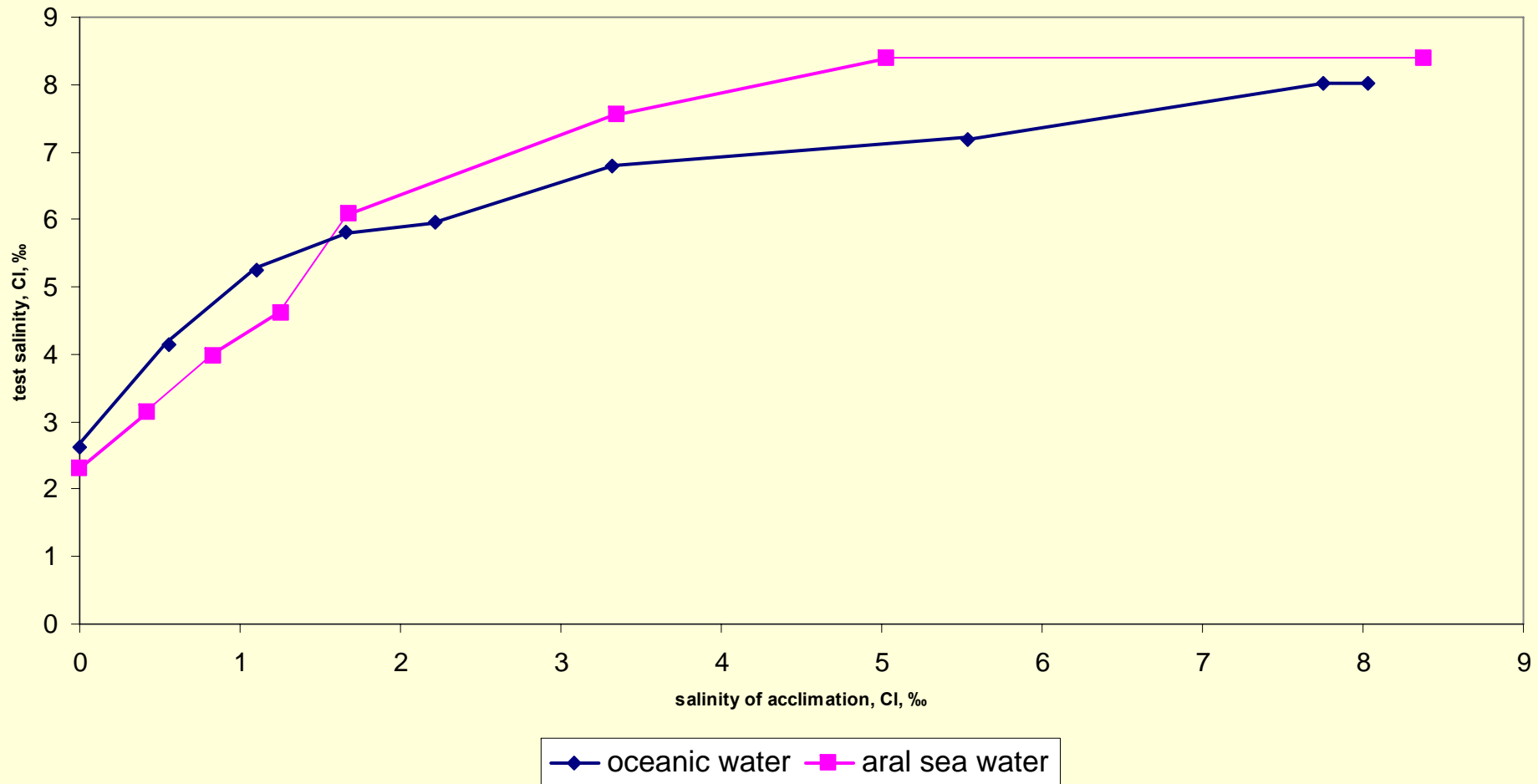
Salinity tolerance polygon of *P. caudatum*



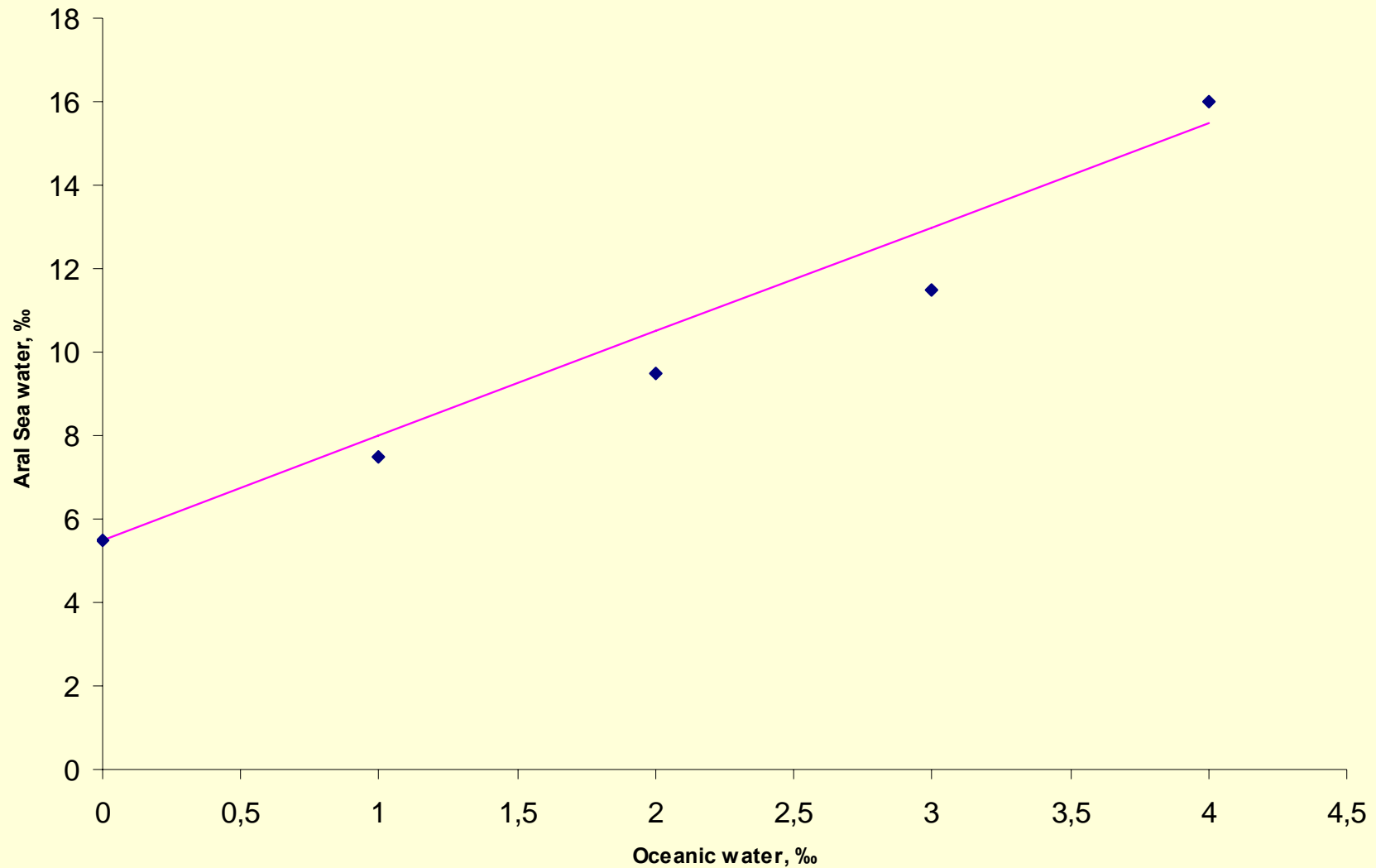
Salinity tolerance polygon of *P. jenningsi*



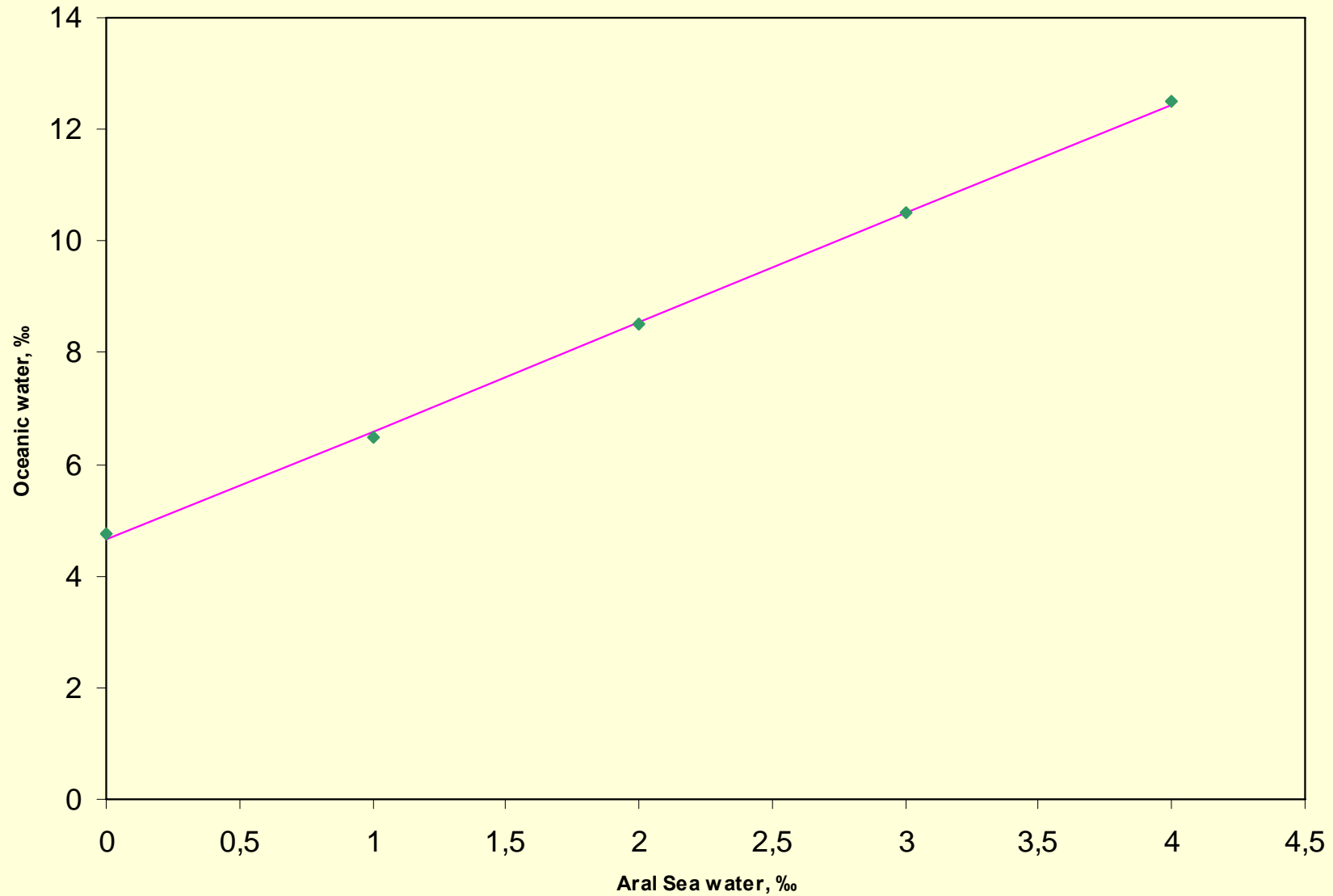
Upper tolerance limit of *P. primaurelia*



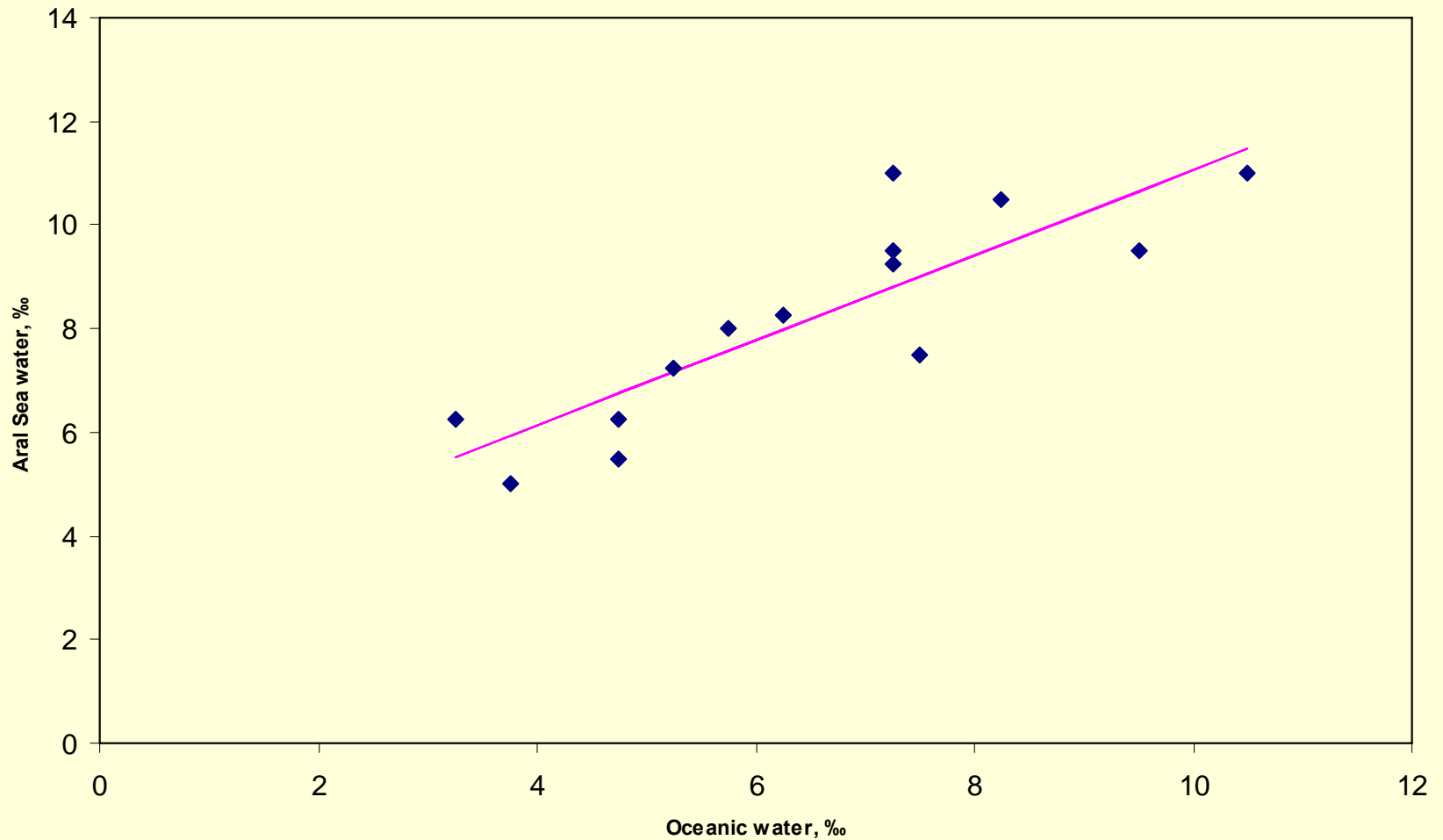
Upper tolerance limit of *P. primaurelia* acclimated to oceanic water in Aral Sea water



Upper tolerance limit of *P. primaurelia* acclimated to Aral Sea water in oceanic water



Correspondence of upper salinity tolerance limits of ciliates acclimated to Aral Sea water and oceanic water



Thank you
for attention